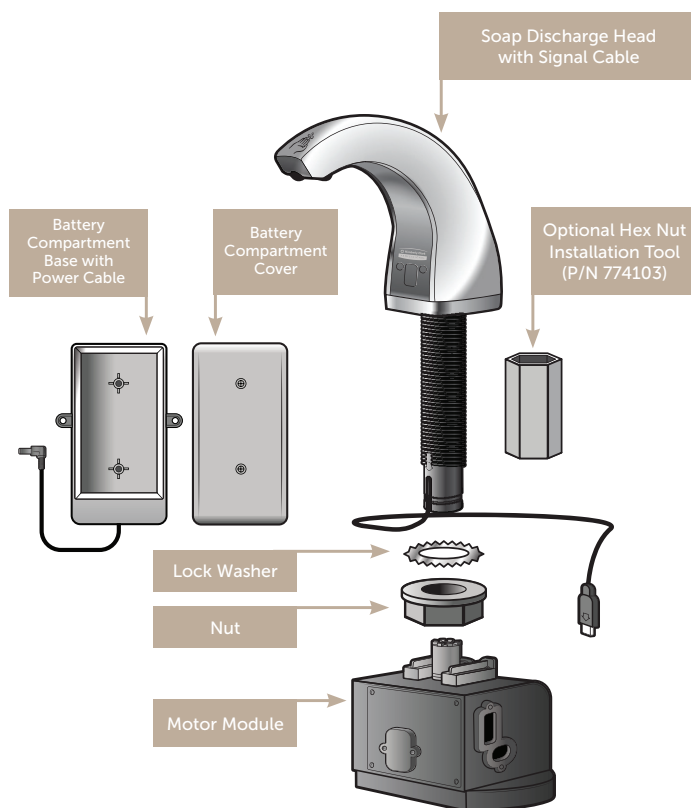


Dispenser Code# 47604



Use of this Dispenser

Not recommended for outdoor installation or in wet environments. Do not attempt to clean the dispenser with a water jet. Follow the installation and usage instruction. Only use genuine Kimberly-Clark Professional product refills intended for the specific model. The dispenser can be cleaned using a damp cloth and detergent, do not use abrasive cleaning products.

These instructions are available at www.kcprofessional.com.

General Safety Information

This dispenser can be used by children over the age of 8 years old and persons with reduced physical, sensory or mental capabilities, or lack of experience and knowledge, provided they have been given supervision or instruction concerning use of the dispenser by a person responsible for their safety. Access to the service area is restricted to persons who have knowledge and practical experience of the dispenser, in particular as far as safety and hygiene are concerned.

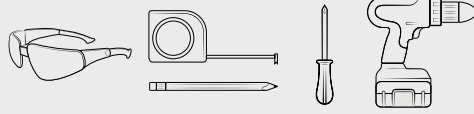
This dispenser is not a toy and shall not be used by children as such. Children shall not perform cleaning or user maintenance of this dispenser. High-risk individuals are not expected to use this dispenser safely unless continuous supervision is given

Need more information?
These instructions and additional resources are available at www.kcprofessional.com.



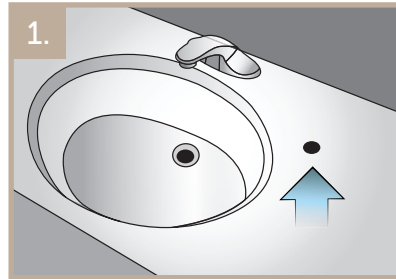
Dispenser Installation

Materials Required:



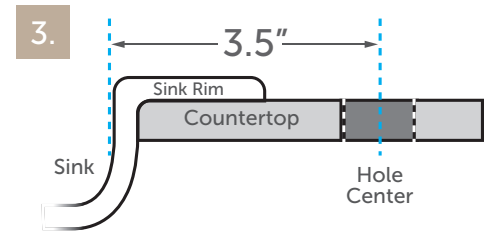
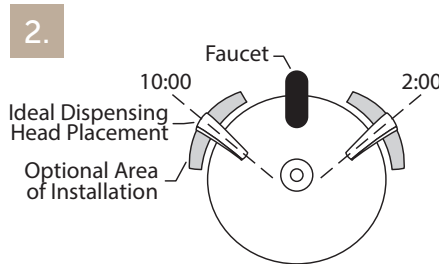
- Phillips Bit
- Cutting Fluid
- 1" Diameter Hole Saw (Diamond Bit for Granite or Stone)
- Adjustable Wrench
- Clear Silicone Caulk
- Magic Marker

1. If a 1" hole already exists on the countertop, go to step 5.



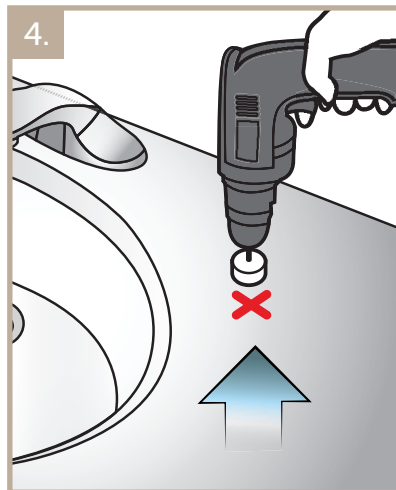
Note: If drilling of the counter top is required, be sure to use an approved KC Installer or other trained professional.

2. If drilling a new hole, it is recommended the hole be away from the faucet, preferably in the 10 o'clock or 2 o'clock position.
3. Using a tape measure locate and mark the center line of the hole a maximum of 3.5" from the inside edge of the sink.

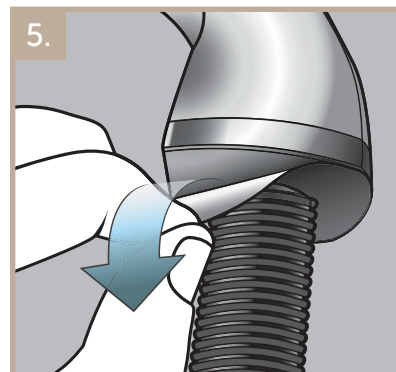


4. Drill a 1" diameter hole in the marked location. Clean the area around the hole so it is free of debris.

Important: Use the proper drill bit for your surface and use cutting fluid to cool the bit during drilling.



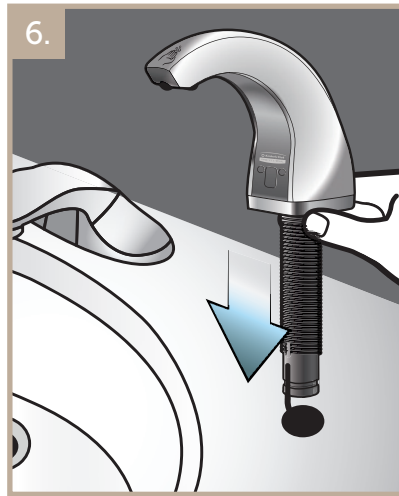
5. Remove adhesive liner on the bottom surface of the soap discharge head.



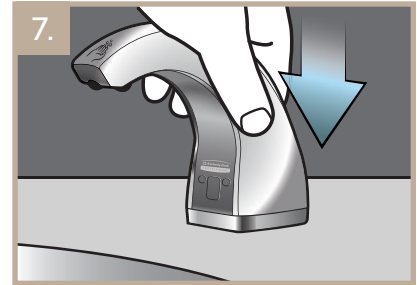


Dispenser Installation

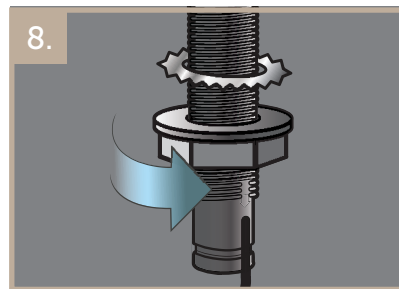
6. Insert the signal cable and threaded shaft of the soap discharge head through the hole in the countertop.



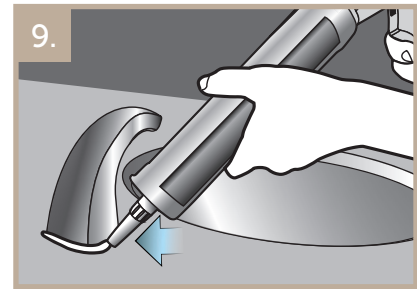
7. Finalize the position of the soap discharge head and then press down firmly to secure it.



8. Position the lock washer and nut on the bottom of the threaded shaft. Thread the nut and continue turning until both lock washer and nut are secure to the underside of the countertop.

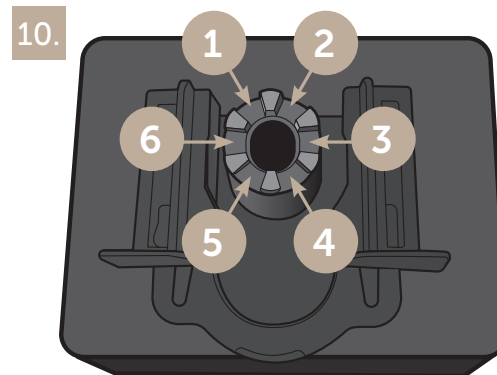


Note: Use the optional hex nut installation tool in areas where space is limited.
(Spare Part 774103)

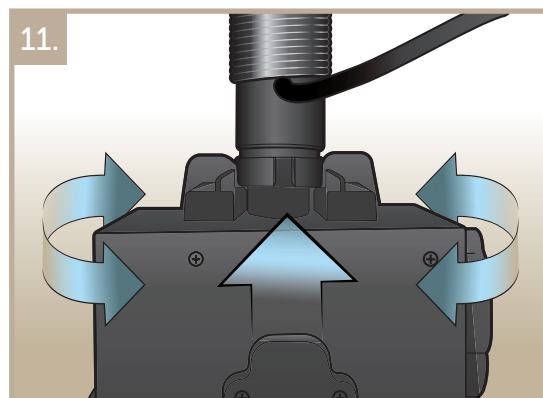


9. Apply a bead of clear silicone caulk around the perimeter of the soap discharge head base after it is secure to the countertop.

10. Orient the motor module under the threaded shaft for optimal clearance with the underside of the sink and any other obstructions. The motor module has six (6) possible positions to connect with the threaded shaft, at least one will be optimum.



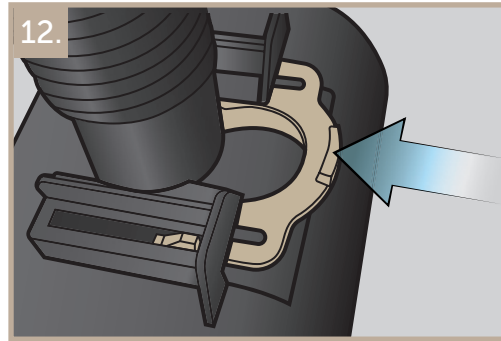
11. Push the motor module lightly into the threaded shaft while rotating it slightly clockwise and counterclockwise. When the motor module can no longer rotate it is fully seated.



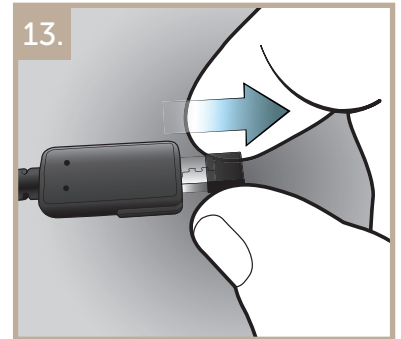


Dispenser Installation

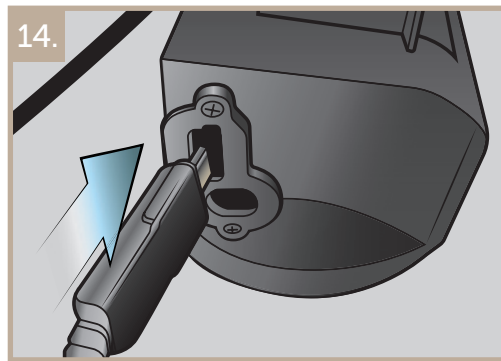
12. While holding the motor module in place, slide the clip on the motor module forward to lock the motor module to the threaded shaft.



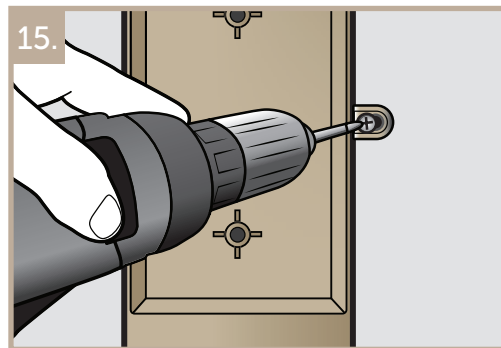
13. Remove the protective cap on the end of the signal cable.



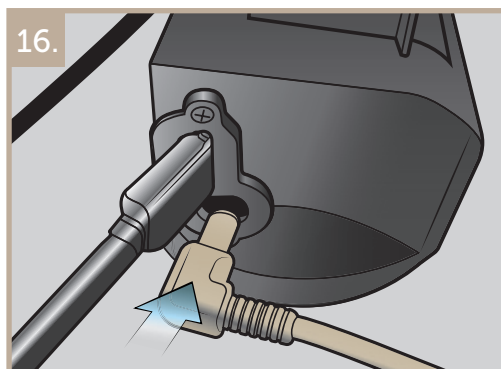
14. Orient the plug on the end of the signal cable so it is properly keyed with the connector on the motor module. While holding the motor module push the plug into the connector until fully seated.



15. Attach the battery compartment back to the back or side walls under the countertop using the screws and wall anchors provided. Position the battery compartment back no further than 32" from the motor module.

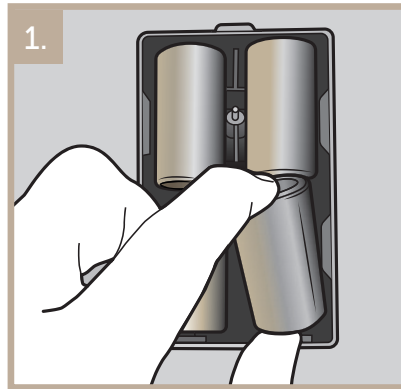


16. Orient the plug on the end of the power cable so it's properly keyed with the connector on the motor module. While holding the motor module push the plug into the connector until fully seated.

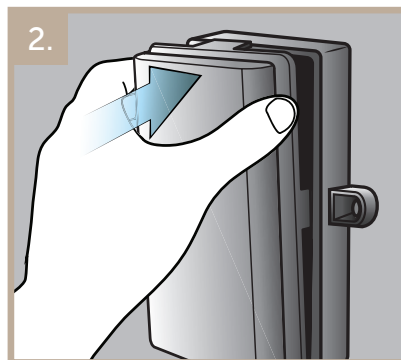


⚡ Battery Installation

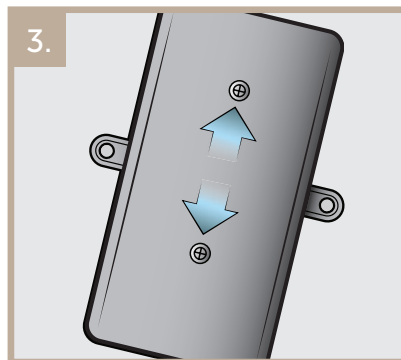
1. Load four (4) batteries into the battery compartment cover ensuring polarity is correct.



2. Orient the battery compartment cover with the extension tab on top and install it into the battery compartment base.



3. Tighten the two screws on the battery compartment cover until secure.

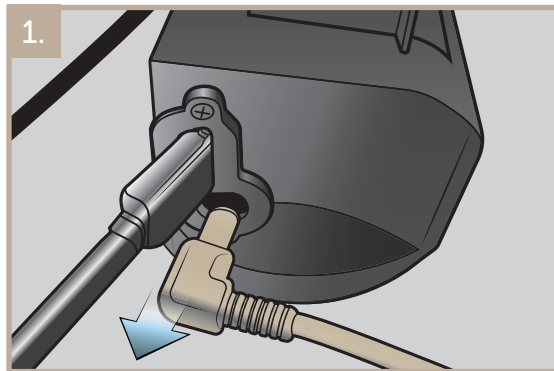


⚡ Battery Information

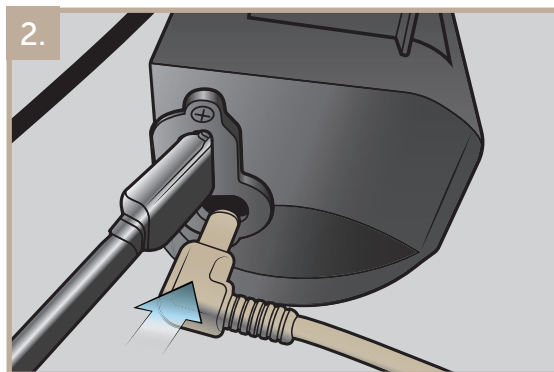
- 4D type 1.5V alkaline batteries required.
- Batteries provided for initial installation.
- Change all 4 batteries at the same time, do not mix types or brand of batteries.
- Please follow the battery insertion instructions ensuring polarity is correctly aligned.
- Used batteries are to be disposed of safely and follow local environmental policy for disposal.
- Do not short circuit the supply terminals of the battery or the dispenser.
- Non-rechargeable batteries are not to be recharged.
- Remove batteries if stowed unused for an extended amount of time.

Power Adapter

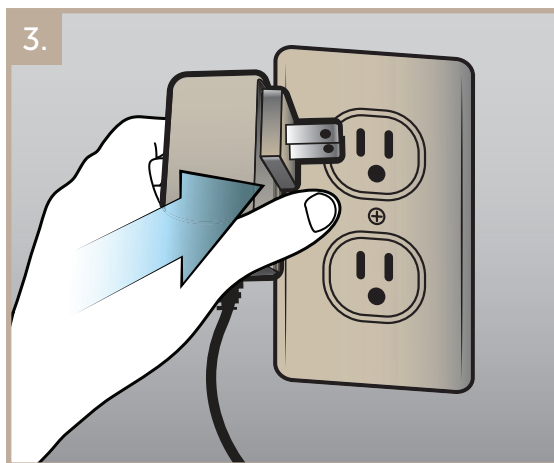
1. If the dispenser is running on battery power, remove the battery power connector while holding the motor module.



2. Orient the plug on the end of the power adapter so it's properly keyed with the connector on the motor module. While holding the motor module push the plug into the connector until fully seated.



3. Plug the body of the power adapter into the closest 110V AC outlet. Note that the cord is 6 feet long.

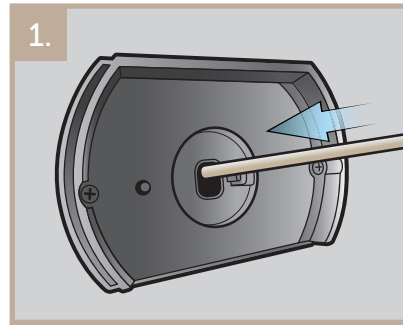


Note: Use only Kimberly Clark Professional Power Adapter #51224

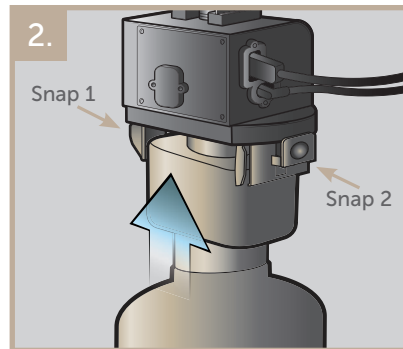


Load New Bottle

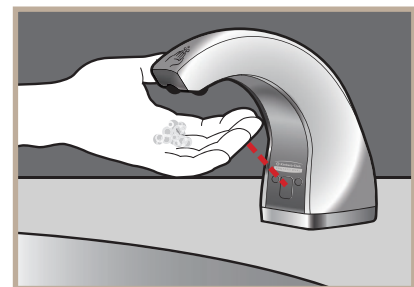
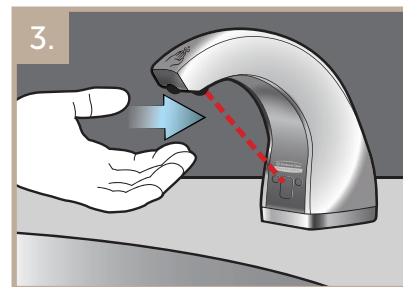
1. Slip the straw into the underside of the motor module.



2. Push the refill bottle up into the motor module until both snaps on the bottle are secure.

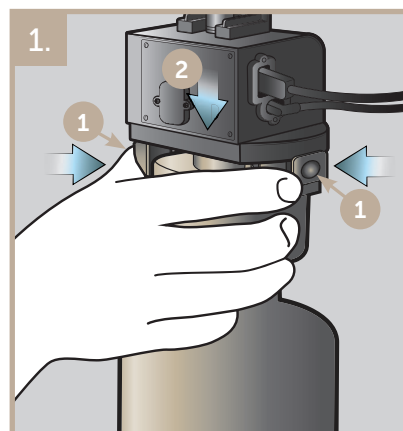


3. Prime the pump by placing one hand under the soap discharge head in order to break the opposing IR beam to activate the motor. Repeat until a consistent shot of foam soap is dispensed.

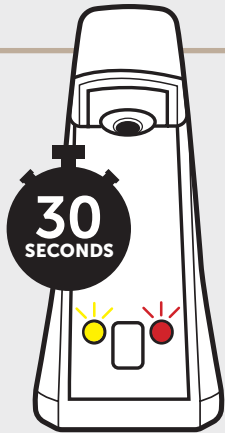


Remove Empty Bottle

1. Squeeze the release tabs (1) on the top of the bottle and slide the bottle down (2) and out of the motor module.

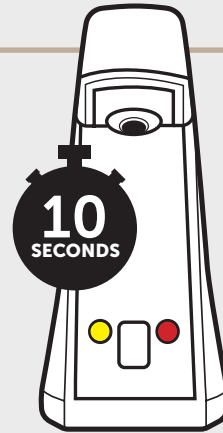


Notifications



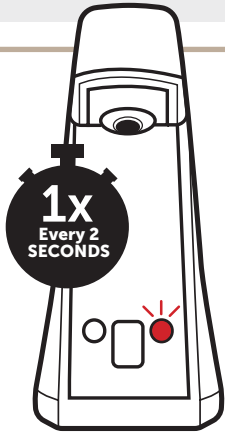
Power On

Whenever power is connected to the dispenser both the red and yellow LEDs on the soap discharge head will flash to indicate the software version. The flash pattern will repeat for 30 seconds or until a soap bottle is installed.



Soap Bottle Installed

Whenever a soap bottle is properly installed, both the red and yellow LEDs on the soap discharge head will illuminate and stay on for 10 seconds.



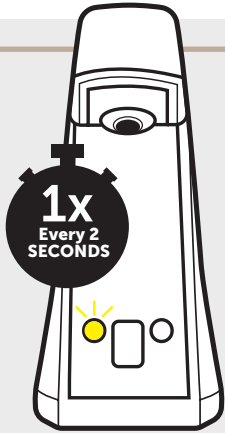
Low Battery

When battery power is low, the red LED on the soap discharge head will flash red one time every two seconds. To resolve this, replace the batteries.



Dead Battery

When battery power is insufficient to power the motor the red LED on the soap discharge head will flash red two times every second. To resolve this, replace the batteries.



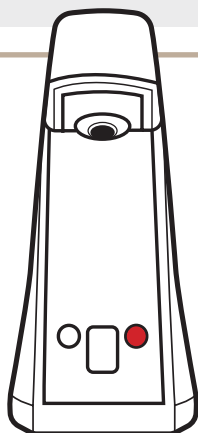
Low Soap

When the amount of soap remaining is low, the yellow LED on the soap discharge head will flash yellow one time every two seconds. To resolve this, replace the soap bottle with a new, full one. *Note: Always replace with full bottles.*



Out of Soap

When there is no soap remaining the yellow LED on the soap discharge head will flash yellow two times every second. To resolve this, replace the soap bottle with a new, full one. *Note: Always replace with full bottles.*



Motor Overcurrent

Whenever the current exceeds 1800mA the dispenser will shut down and the red LED will illuminate and stay on. To resolve this, disconnect the power cable, wait 5 seconds, and plug it back in and activate the dispenser. If the problem persists, replace the soap bottle with a new one and repeat the power cable reset procedure above.

®/™ Trademarks of Kimberly-Clark Worldwide, Inc. or its affiliates. © KCWW

®/™ Marques de commerce de Kimberly-Clark Worldwide, Inc. ou de ses filiales. © KCWW

Made in CHINA / Fabriqué en CHINA / Fabricado en los CHINA

Distributed in the U.S. by Kimberly-Clark Global Sales, LLC, Roswell, GA 30076-2199

Distributed in Canada by Kimberly-Clark Inc., Mississauga, Ontario L5B 3Y5

Americans with Disabilities Act (For use in U.S. only): Title III of the Americans with Disabilities Act ("ADA") governs, in detail, the placement and operation of dispensers. You should ensure that your mounting and use of dispensers complies with that law as well as the regulations issued under that statute. The mounting suggestions in this document may or may not fulfill the obligations of the ADA with respect to your facility.

Ley de protección de discapacitados (aplicable sólo en EE.UU.). El Artículo III de la Ley de protección de discapacitados, ADA (*Americans with Disabilities Act*) regula en detalle la instalación y el funcionamiento de distribuidoras. Asegúrese que la instalación y las disposiciones de uso de la distribuidora cumplan con esta ley y los reglamentos correspondientes derivados de ella. Es posible que las instrucciones de instalación aquí descritas cumplan o no con las disposiciones de la ADA dependiendo de las características de su construcción.

Loi concernant les Américains handicapés : Le titre III de l'*Americans with Disabilities Act* (« ADA ») (Loi concernant les Américains handicapés) régit, de façon détaillée, l'emplacement et le fonctionnement des boîtes distributrices. Vous devez veiller à ce que votre méthode de pose et d'utilisation des boîtes distributrices soit conforme à la loi, de même qu'aux règlements y afférents. Les suggestions relatives à la pose qui figurent dans le présent document peuvent répondre ou non aux exigences de l'ADA dépendant du type d'installation.